

# NEW FUEL LABELLING IN EUROPE



DIESEL

E10

98

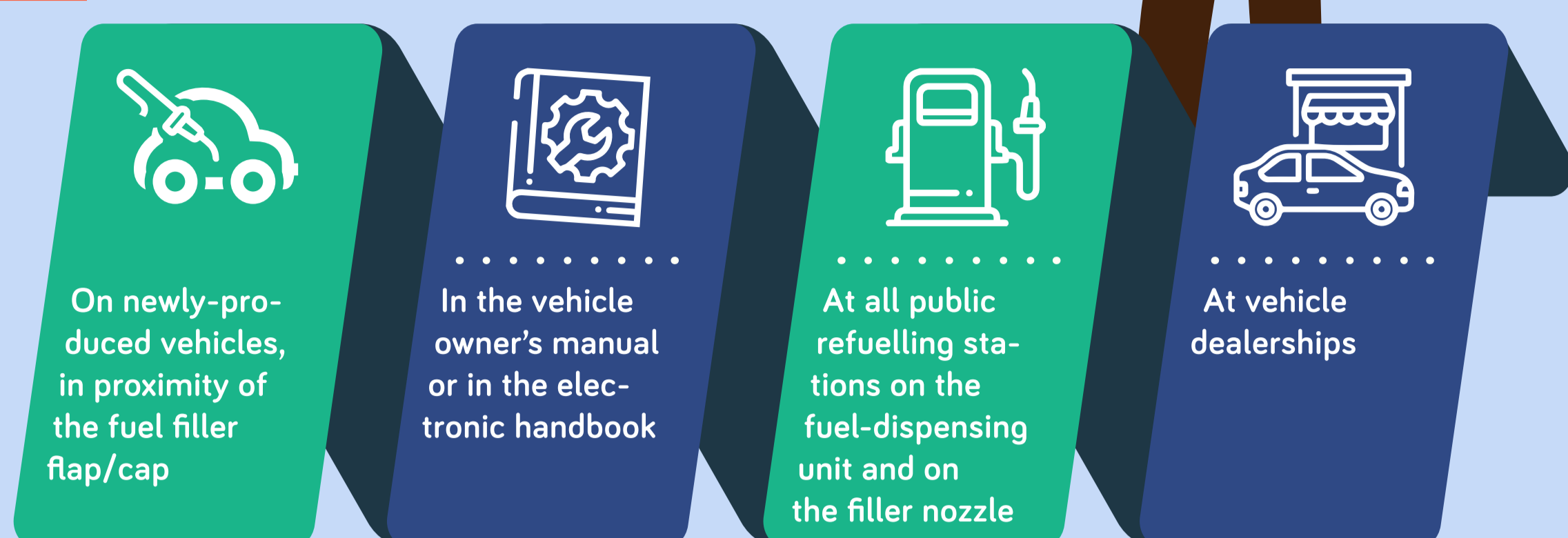
LPG

ANEC has contributed to the development of a new European standard\* that defines harmonised graphical symbols showing the compatibility between a vehicle and fuels on sale across Europe.

\*EN 16942 'Fuels - identification of vehicle compatibility - graphical expression for consumer information'

## WHAT YOU NEED TO KNOW

**October 2018**  
New unique and harmonised set of fuel labels in Europe.



## WHICH VEHICLES ARE CONCERNED?



Mopeds, motor cycles, tricycles and quadricycles



Passenger cars



Light commercial vehicles



Heavy-duty commercial vehicles



Buses and coaches



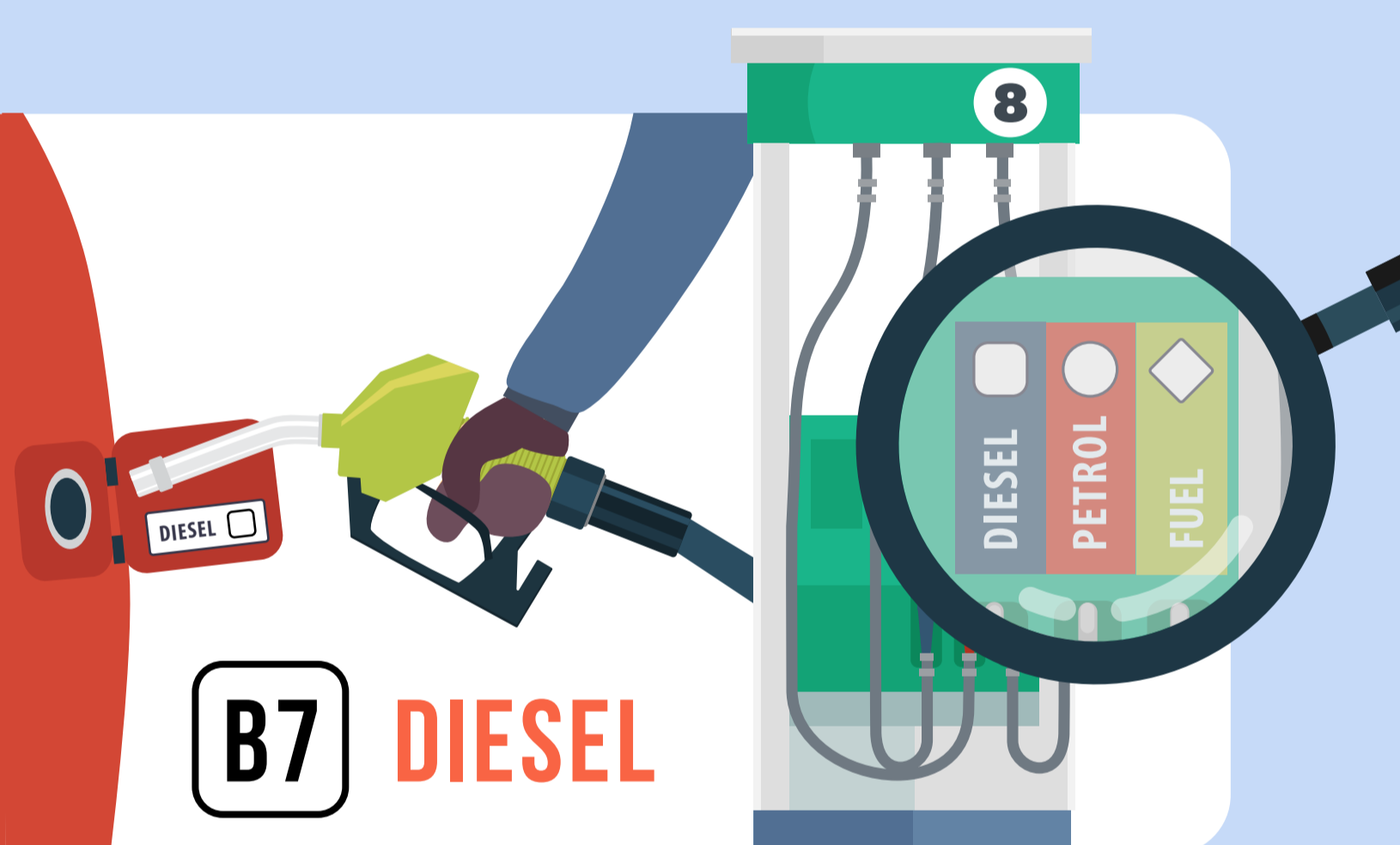
The labels are only for new vehicles placed on the market for the first time or registered as of **12 October 2018**

## WHERE?



The label will be placed on newly produced vehicles and in filling pumps in **all 28 European Union** member states, EEA countries (Iceland, Lichtenstein and Norway), and also **Macedonia, Serbia, Switzerland and Turkey**.

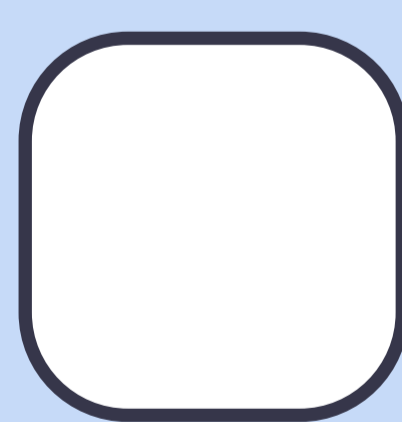
The label is a **visual tool to help consumers** verify that they correctly select the appropriate fuel for their vehicle. You will only need to match the label of your vehicle with the one on the fuel pump.



## WHAT ABOUT ELECTRIC VEHICLES?

ANEC is now working on a similar set of labels to guide consumers in the recharging of electric vehicles. These will be introduced soon.

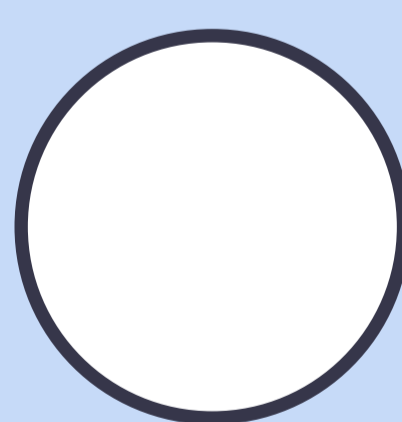
## EXAMPLES OF NEW LABELS



**DIESEL**



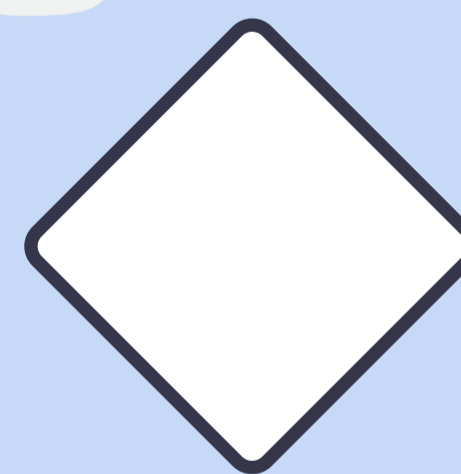
The shape for a diesel-type fuel is a **square** (B = specific biodiesel components present in diesel, XTL = synthetic diesel, not derived from crude oil)



**PETROL**



The shape for a petrol-type fuel is a **circle** (E = specific bio-components present in petrol)



**FUEL**



The shape for a gaseous-type fuel is **diamond**